



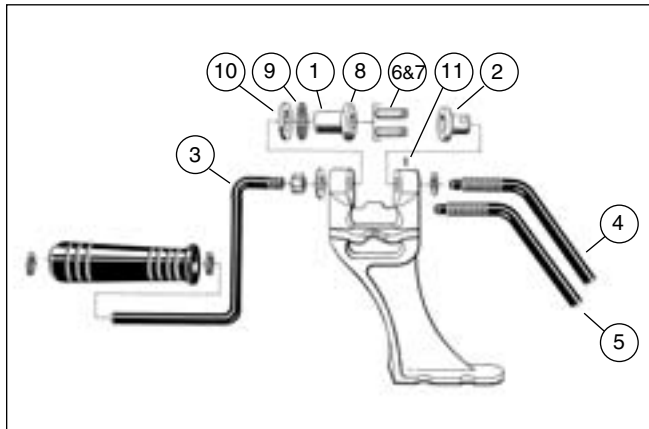
DURA MAX™ HEAVY DUTY RIVET SPINNER

The heavyweight champion of hand-operated rivet spinners. Designed to meet all rivet-spinning needs. Spins all chain rivets up to .404" pitch, and adapts easily for spinning 3/4" rivets when used with the 3/4"-pitch adaptor kit on the right.

Part No.	Description
24549-si	DURA MAX™ HEAVY-DUTY RIVET SPINNER - METRIC

REPLACEMENT PARTS

Item No.	Metric Part No.	Description
1	108777si	ANVIL DRIVE BUSHING
2	108778si	THREADED BUSHING
3	108779si	HANDLE ASSEMBLY
4	108780si	TAKE-UP HANDLE (A)
5	108781si	TAKE-UP HANDLE (B)
6	108782si	SPINNER ANVIL (A)
7	108783si	SPINNER ANVIL (B)
8	108784si	ANVIL DRIVE BEARING
9	108785si	THRUST BEARING
10	108786si	THRUST WASHER
11	108787si	SET SCREW



3/4"-PITCH RIVET SPINNER ADAPTOR KITS

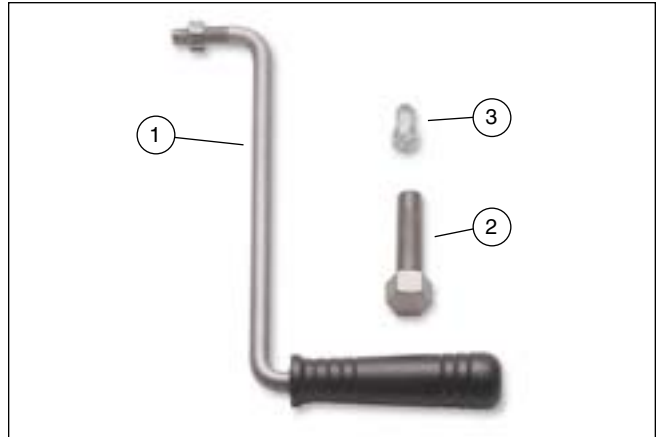
- Enables spinning of 3/4"-pitch chain rivets on the Dura Max™ Heavy duty Rivet Spinners, P/Ns 24549-s and 24549-si. Like the rivet spinners, these adaptor kits come in two configurations: standard American (SAE), and metric.
- Each adaptor kit includes:
 - one anvil, one take-up bolt, and one extra-long handle.

Part No.	Description
108742	3/4"-PITCH RIVET SPINNER ADAPTOR KIT - SAE
108742-si	3/4"-PITCH RIVET SPINNER ADAPTOR KIT - METRIC

SAE & METRIC REPLACEMENT PARTS

Use SAE parts only on spinner P/N 24549-s, use metric parts only on spinner P/N 24549-si.

Item No.	SAE Part No.	Metric Part No.	Description
1	108788	108788si	EXTRA-LONG HANDLE
2	108789	108789si	TAKE-UP BOLT, HEX END
3	108790	108790si	SPINNER ANVIL, 3/4" PITCH



24549-si



DURA MAX™

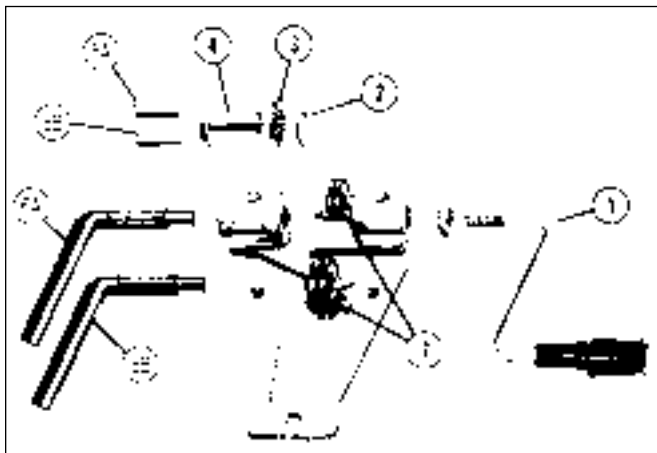
BENCH-MODEL RIVET SPINNER

The basic tool for joining chain loops. • Produces consistent rivet spins • Minimizes risk of chain breakage • Complete unit includes: "A" and "B" anvils, plus both "A" and "B" take-up handles

Item No.	Part No.	Description
	24549A	BENCH-MODEL RIVET SPINNER

REPLACEMENT PARTS

1	38601	SPINNER HANDLE WITH GRIP
2	38602	SHIM
3	38605	THRUST BEARING
4	38604	SLEEVE
5A	38597	"A" ANVIL FOR 3/8", .404", AND 1/2" CHAIN
5B	38598	"B" ANVIL FOR 1/4" AND .325" CHAIN
6A	38599	"A" TAKE-UP HANDLE FOR 3/8", .404", AND 1/2" CHAIN
6B	38600	"B" TAKE-UP HANDLE FOR 1/4" AND .325" CHAIN
7	38603	CHAIN SUPPORT DISC



3/4"-PITCH RIVET SPINNER ADAPTOR KIT

Enables spinning of 3/4"-pitch chain rivets on the Oregon® Bench-model Rivet Spinner.

Part No.	Description
100871	3/4"-PITCH RIVET SPINNER ADAPTOR KIT, INCLUDES: (1) ANVIL, (1) GREASE GUN, (1) SPINNER-HANDLE ADAPTOR



REPLACEMENT PARTS FOR DISCONTINUED MODELS

HAND RIVET SPINNER (*old type*)

Hand rivet spinner models 24549 and 16338 have been discontinued. The following replacement parts continue to be available.

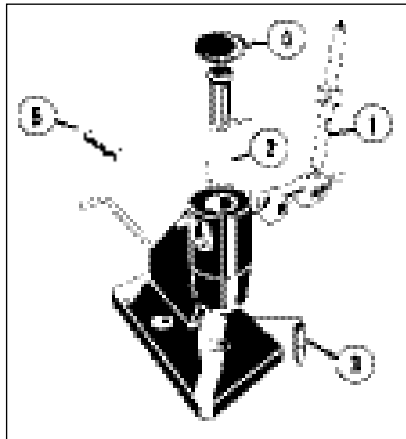
Part No.	Description
26889	"A" ANVIL FOR 3/8" AND .404" CHAIN
26890	"C" ANVIL FOR 1/4" AND .325" CHAIN



BENCH-MODEL CHAIN BREAKER

Drives out rivets from 1/4"-, .325"-, 3/8"-, .404"-, and 1/2"-pitch chains. • Replacement parts available separately

Item No.	Part No.	Description
	24548A	BENCH-MODEL CHAIN BREAKER
REPLACEMENT PARTS		
1	38592	HANDLE
2	38593	SPRING
3	38594	PUNCH
4	38595	CAP
5	107602	ANVIL FOR: 1/4"-, .325"-, 3/8"- AND .404"-PITCH CHAIN




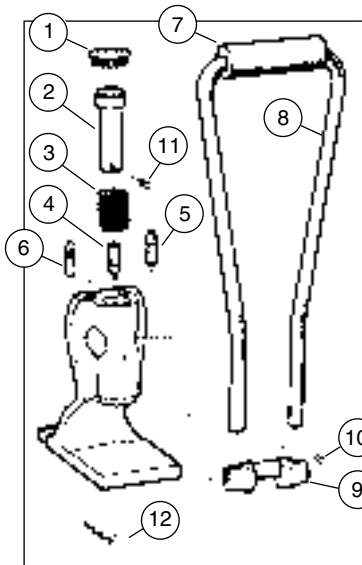
24548A

DURA MAX™ HEAVY DUTY CHAIN BREAKER & BAR-NOSE RIVET DRIVER

- Another heavyweight champion of service tools from Oregon®. This multi-purpose tool breaks any kind of saw chain and can also be used to drive out bar-nose rivets, including the nose rivets on big 3/4"-pitch harvester bars. In breaker mode it works on all chain pitches, even big 3/4"-pitch harvester chains*, requiring just one pull of the oversized two-point handle. Heavy-duty materials and top-quality components are used throughout, and replacement parts are available separately to keep this ultimate shop tool in service for a long, long time.
- *Punches for all chain pitches are included. Anvil for 3/4"-pitch chain must be purchased separately (P/N 25049, see next page).

Part No.	Description
24548-si	DURA MAX™ HEAVY-DUTY CHAIN BREAKER

REPLACEMENT PARTS		
Item No.	Part No.	Description
1	110435si	CAP
2	110436si	PUNCH HOLDER
3	110440si	RETURN SPRING
4	110439si	STANDARD CHAIN PUNCH (FOR 1/4"-, .325"-, 3/8"- AND .404"-PITCH CHAINS)
5	102623si	3/4"-PITCH CHAIN PUNCH
6	110438si	BAR-NOSE RIVET PUNCH
7	110441si	HANDLE GRIP
8	110437si	HANDLE
9	110434si	CAM
10	110442si	SET SCREW, HANDLE
11	110443si	SET SCREW, PUNCH HOLDER
12	111939	BREAKER ANVIL
13	505033	BREAKER ANVIL FOR HARVESTER BAR NOSES 



24548-si



RETRO-FIT KIT FOR 3/4"-PITCH CHAIN

Enables breaking of 3/4"-pitch chain on the Oregon® Bench Chain Breaker P/N 24548A.

Part No.	Description
102616	3/4"-PITCH BREAKER RETROFIT KIT, INCLUDES: (1) HANDLE, (1) PUNCH, P/N 102618, and (1) ANVIL
102618	3/4"-PITCH CHAIN PUNCH, AVAILABLE SEPARATELY



102618

POCKET CHAIN BREAKER

Easy to use. • Breaks 1/4"-, .325"-, 3/8"-, and .404"-pitch chains
• Punch sold separately

Part No.	Description
39472	ASSEMBLY INCLUDES (1) PUNCH, (1) ANVIL FOR: 1/4"-, .325"-, 3/8"-, AND .404"-PITCH CHAINS
39470	PUNCH, FOR ASSEMBLY 39472



39470

ADJUSTABLE ANVIL

For use with 1/4"-, .325"-, 3/8"-, and .404"-pitch chains.

Part No.	Description
105530	ADJUSTABLE ANVIL



ANVIL FOR 3/4"-PITCH CHAIN

Aids in the breaking of 3/4"-pitch chain on your breaker.

Part No.	Description
25049	ANVIL FOR 3/4"-PITCH CHAIN



REPLACEMENT PARTS FOR DISCONTINUED MODELS

BENCH-MODEL CHAIN BREAKER (*old type*)

Chain breaker models 25048 and 16329 have been discontinued. The following replacement parts continue to be available.

Part No.	Description
17519	ANVIL-1/4", .325", 3/8", .404", 1/2" CHAIN
26870	PUNCH FOR 1/4" TO 1/2"-PITCH CHAIN



POWER RIVET SPINNER

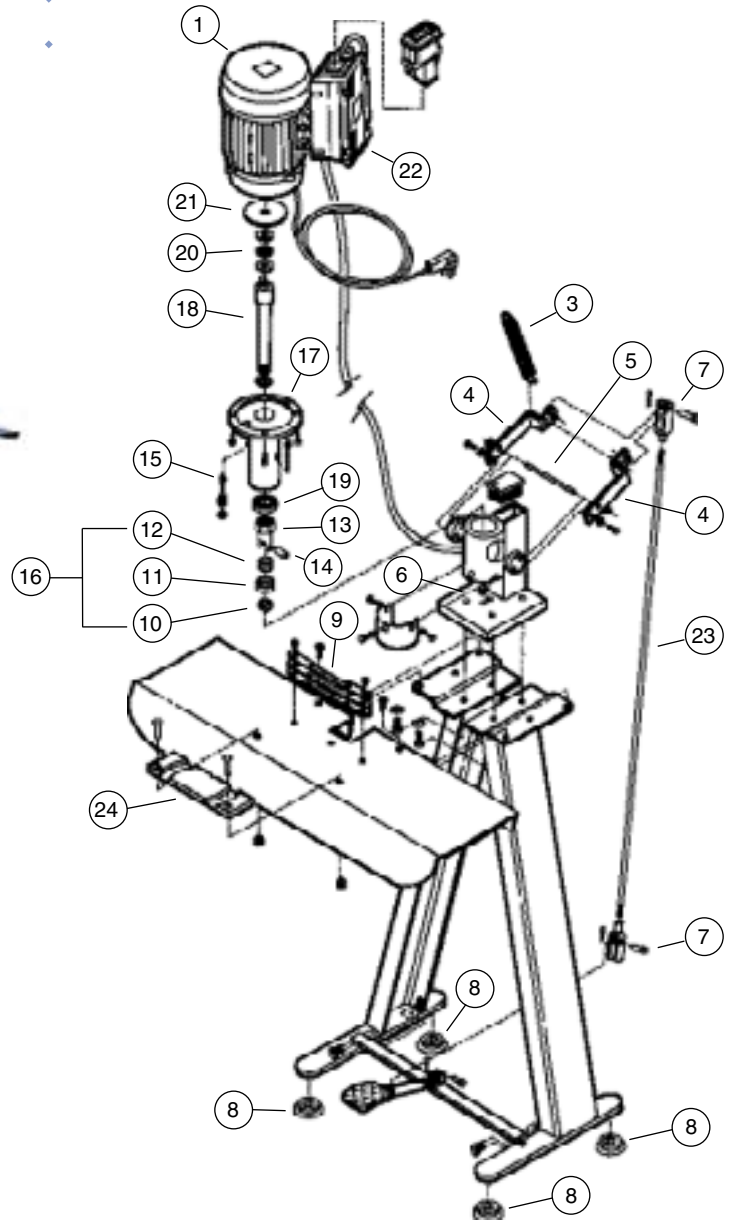
The complete, heavy-duty, 115-volt workstation for high-volume rivet-spinning operations. Recommended for use on 1/4"-pitch through .404"-pitch chains. Working table height: 45-1/2".



109182

Part No.	Description
----------	-------------

109182	POWER RIVET SPINNER
--------	---------------------



POWER RIVET SPINNER REPLACEMENT PARTS

Item No.	Part No.	Description	Item No.	Part No.	Description
1	112194	115 VT. ELECTRIC MOTOR	14	109285	CLEVIS PIN, RIVET TOOL
3	109274	SPRING, ACTUATION LEVER RETURN	15	109286	STOP KIT, ADJUSTABLE
4	109275	BRACKET, ACTUATION MECHANISM	16	112255	RIVET TOOL, ROTATING POSITION (B, IN-LOOSE, INCLUDES ITEM NUMBERS 10, 11, 12, 13 AND 14)
5	109276	SHAFT, ACTUATION MECHANISM	17	109288	HOUSING, ACTUATION SHAFT
6	109277	RIVET TOOL STATIONARY POSITION	18	109289	SHAFT, TOOL ACTUATION
7	109278	CLEVIS FITTING KIT	19	109290	SHAFT BEARING, LOWER
8	109279	FOOT PAD, STAND SUPPORT	20	109291	SHAFT BEARING KIT, UPPER
9	109280	GUARD PLATE, CHAIN POSITION	21	109292	PLATE, SHAFT ASSEMBLY UPPER
10	109281	RIVET TOOL, ROTATING POSITION	22	109879	POWER SWITCH
11	109282	FLANGE, RIVET TOOL ROTATING	23	110596	CONNECTOR ROD KIT
12	109283	TENSION SPRING RIVET TOOL ROTATING	24	112195	FLAT GUIDE PLATE
13	109284	FITTING, RIVET TOOL ASSEMBLY (A, INSTALLED)			